

Crabel Advanced Trend UCITS Fund

CTA/Managed Futures

July 2022

Performance Returns

The Crabel Advanced Trend UCITS Fund returned -3.76% during the month of July (USD Founder Class).

Investment Objective & Strategy

The Crabel Advanced Trend UCITS Fund is advised by Los Angeles based managed futures trading pioneer, Crabel Capital Management, LLC. Crabel Advanced Trend is a portfolio of systematic trading strategies designed to efficiently capture long-term trend following returns across a diverse set of global futures and foreign exchange instruments. The program aims to generate greater alpha and deliver a more competitive risk-adjusted return than the broader trend following industry. In pursuing this objective, Crabel Advanced Trend employs multiple price-based strategies engineered to identify and profit from continuations in price movement across approximately 200 markets globally. The program seeks to mitigate downside risk by dynamically sizing trades relative to market volatility, actively employing the use of stops on all trades throughout the portfolio, and effectively diversifying overall portfolio volatility across market sectors and geographic regions. Individual positions are generally held for 35-45 days, and the portfolio in aggregate targets an annualized standard deviation of 15%.

Monthly Commentary

The Crabel Advanced Trend UCITS Fund traded to a loss of -3.76% in July, which decreased the year-to-date return to +18.84%. Advanced Trend traded to a modest positive return over the first half of July but then faced challenges as markets reversed aggressively into a risk-on environment through the remainder of the month. Falling yields and an equity market rally were the main factors frustrating trading. All sectors except foreign exchange traded to a negative return for the month. The fixed income sector suffered the largest loss, posting a negative attribution for the first time in 2022. Most of the difficulty in the sector was in non-US markets. Six of the seven most challenging markets in July were all non-US fixed income markets. In the equities sector, an overall short posture resulted in losses as equities rallied over the final two weeks of the month. For the second month in a row, the commodities sector also posted a loss, driven by challenging reversals in energies and in agricultural markets. All but two of the 15 best markets for the portfolio in July were foreign exchange markets. Good opportunity in the foreign exchange sector was aided by a continued trend towards higher volatility across the sector. Except for the Euro Currency versus the US Dollar, the best foreign exchange opportunities were found either outside the G7, or in crosses against the Euro Currency.

Why Advanced Trend?

- **Thoughtful Design.** Intuitive research into time-frame selection, sector exposure, volatility interpretation and trend quality identification is leveraged to maximize trend capture.
- **Aggressive Trading Cost Reduction.** The cost to execute a trend following strategy adds up far more quickly than is realized. Trade slippage is reduced through Crabel's proprietary algorithmic execution infrastructure.
- **Structurally Diversified.** The program is timeframe and sector diversified trading a broad array of derivative instruments.

	Jan	Feb	Mar	Apr	May	Jun	Jul	Aug	Sept	Oct	Nov	Dec	Y-T-D
2022	1.53%	3.67%	8.48%	5.07%	-0.42%	3.35%	-3.76%						18.84%
2021	-0.47%	4.54%	-0.08%	3.24%	2.45%	-4.02%	-1.53%	-1.00%	-1.83%	6.85%	-7.15%	0.79%	0.95%
2020	3.68%	4.15%	8.88%	-0.02%	-4.51%	-2.19%	2.23%	-1.69%	-2.58%	-0.47%	4.61%	7.53%	20.36%
2019	-6.55%	0.27%	5.83%	0.86%	1.59%	2.20%	4.01%	8.12%	-4.16%	-5.72%	1.07%	-3.23%	3.23%
2018	9.22%	-10.72%	-0.83%	0.91%	-7.21%	-0.11%	-0.82%	2.11%	-1.27%	-4.17%	-1.75%	1.56%	-13.54%
2017	-	-	-	-	-	-	-	-	-	5.17%	3.31%	2.11%	10.95%

The performance figures quoted above represent the performance of the Crabel Advanced Trend UCITS Fund Founder USD Share Class, since launch on 2 October 2017. These performance figures refer to the past and past performance is not a reliable guide to future performance.

The Manager



Crabel is a global alternative investment firm specializing in systematic, automated trading of worldwide futures and foreign exchange. The Los Angeles based firm was founded by short-term trading pioneer Toby Crabel and has delivered over 30 years of uncorrelated returns for its institutional clients. The firm has developed a diverse array of trading strategies designed to systematically capture market anomalies implemented through a technologically advanced, low latency infrastructure. Global co-location facilities and proprietary execution algorithms allow the firm to efficiently trade in approximately 200 futures and foreign exchange markets.

Fund Facts

Structure	UCITS Fund
Domicile	Ireland
Liquidity	Daily
Fund AUM	\$77.5 million
Strategy AUM	\$2.04 billion
Inception	2 October, 2017

Share Class	Founder Class
Currency	EUR/USD/CHF/GBP
Mgt. Fee	0.50%
Perf. Fee	0.00%
Min Init. Sub.	10,000,000
ISIN Codes	EUR: IE00BF2X0346 USD: IE00BF2X0569 CHF: IE00BF2X0452 GBP: IE00BF2X0676

Share Class	Inst Class A Pooled
Currency	EUR/USD/CHF/GBP
Mgt. Fee	0.00%
Perf. Fee	10.00%
Min Init. Sub.	10,000,000
ISIN Codes	EUR: IE00BG1V0Y71 USD: IE00BG1V1113 CHF: IE00BG1V0Z88 GBP: IE00BG1V1006

Share Class	Institutional Class
Currency	EUR/USD/CHF/GBP
Mgt. Fee	1.00%
Perf. Fee	0.00%
Min Init. Sub.	1,000,000
ISIN Codes	EUR: IE00BF2X0783 USD: IE00BF2X0908 CHF: IE00BF2X0890 GBP: IE00BF2X0B24

Crabel Advanced Trend UCITS Fund

CTA/Managed Futures

July 2022

Monthly Returns – Crabel Advanced Trend Strategy (non-UCITS)[^]

	Jan	Feb	Mar	Apr	May	Jun	Jul	Aug	Sept	Oct	Nov	Dec	Y-T-D
2022	2.57%	3.18%	8.61%	6.07%	-0.53%	4.12%	-4.82%*						20.19%*
2021	-0.67%	3.51%	0.51%	3.18%	2.81%	-4.42%	-3.15%	-0.74%	-1.80%	8.15%	-7.99%	1.52%	-0.08%
2020	5.41%	4.36%	7.71%	-0.25%	-4.42%	-2.21%	2.40%	-0.96%	-2.45%	-0.40%	4.88%	8.24%	23.57%
2019	-6.81%	0.36%	6.22%	1.21%	3.60%	-0.03%	5.03%	8.62%	-4.94%	-5.79%	0.99%	-3.69%	3.48%
2018	8.86%	-10.68%	-0.30%	0.54%	-7.31%	-0.23%	-1.50%	2.98%	-1.07%	-3.95%	-2.15%	1.28%	-13.91%
2017	-3.01%	4.86%	-1.53%	-3.06%	-0.82%	-2.99%	3.11%	1.91%	-1.62%	5.83%	2.30%	2.86%	7.51%
2016	8.33%	2.66%	-5.85%	-5.16%	0.32%	6.22%	1.67%	-4.26%	-0.08%	-5.44%	-6.40%	1.22%	-7.80%
2015	15.17%	-1.24%	4.02%	-4.91%	1.21%	-5.79%	5.80%	-0.93%	3.85%	-4.24%	1.87%	-1.01%	12.76%
2014	-	-	-	-0.23%	1.63%	1.26%	-3.79%	4.90%	8.27%	8.99%	13.59%	8.69%	50.97%

*Estimate

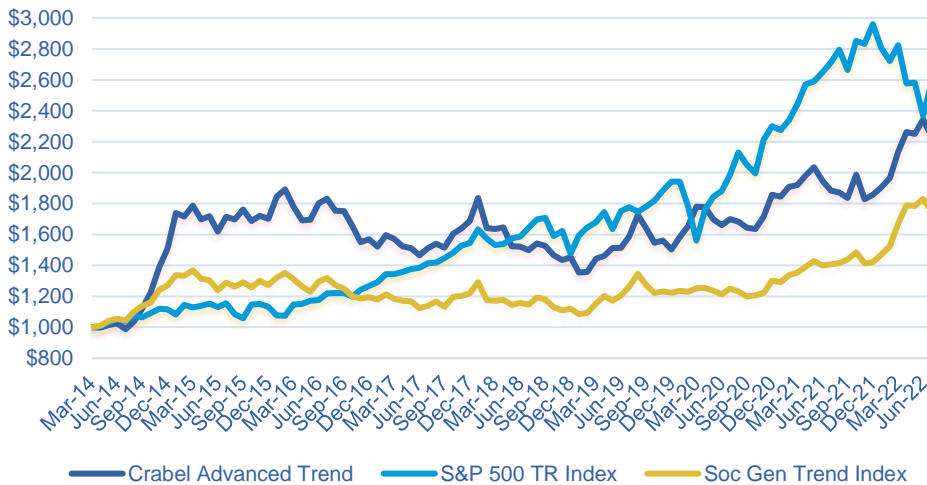
[^]The above performance pertains to a representative account of the Crabel Advanced Trend Strategy and is not representative of the MontLake Crabel Advanced Trend UCITS Fund. UCITS Funds have to abide by certain investment restrictions and consequently the performance of the MontLake Crabel Advanced Trend UCITS Fund may not be similar to that presented above.



Grant Jaffarian
Portfolio Manager

Grant Jaffarian is the Portfolio Manager of Crabel Advanced Trend and a member of the firm's Executive Committee. Grant joined CCM in 2014 as part of its acquisition of AlphaTerra where he was the Founder and Chief Investment Officer. Prior to launching AlphaTerra in April 2013, Grant served as the Chief Investment Officer at Efficient Capital Management. He began his career at Belgium-based Analytic Investment Management, a high turnover futures manager acquired by Robeco Bank. From there, he went on to found Petra Intraday, a short-term systematic investment manager, before joining Efficient. Grant earned a bachelor's degree from Wheaton College where he majored in English and holds an MBA with a concentration in economics from the University of Chicago.

Crabel Advanced Trend Strategy (non-UCITS) vs. Indices



Michael Pomada
President & CEO

Michael Pomada is President and Chief Executive Officer of CCM and a member of the firm's Leadership and Executive Committees. In addition to his executive role, Michael is also the Portfolio Manager of Crabel Gemini and Crabel Contra and developed Crabel Advanced Trend. He spends his time on research and product development, as well as overseeing the front office teams. Michael joined CCM in April 2008 as a portfolio manager focusing on the firm's Equity Main strategies. In late 2009, he spearheaded a firmwide initiative to revamp the organization's trading infrastructure, execution process, and microstructure research. He went on to serve as CCM's Chief Operating Officer from June 2011 to July 2016 when he became President and CEO. Prior to joining CCM, Michael spent time at UBS and managed portfolios at Manchester Trading (Niederhoffer) and Coast Asset Management. He began his career in sales and business development in the interactive entertainment industry before transitioning into finance. A graduate of the University of California, Berkeley, Michael also holds an MBA with a concentration in investments and statistics from the University of Southern California.

Basic Statistics – Crabel Advanced Trend UCITS Fund

CAGR	7.68%	Max DD	-26.02%
Annualized STDEV	14.87%	Max Positive Month	9.22%
Sharpe Ratio (Rf=0)	0.52	Max Negative Month	-10.72%

The figures above pertain to the Crabel Advanced Trend UCITS Fund

Contact Details

Investor Contact

Waystone Capital Solutions (UK) Ltd
2nd Floor, 20-22 Bedford Row
Holborn, London
T: +44 207 290 9493
investorrelations@waystone.com

Management Company

Waystone Fund Management (IE) Ltd
3rd Floor, 76 Baggot Street Lower
Dublin, Ireland
T: +353 1 533 7020
investorrelations@waystone.com

Investment Manager

Crabel Capital Management, LLC
1999 Avenue of the Stars, Suite 2550
Los Angeles, CA 90067
T: +1 (310) 651-2900
clientrelations@crabel.com

Disclaimer

RISK WARNING: Past performance is not a reliable indicator of future results, prices of investments and the returns from them may fall as well as rise. Investments in equities are subject to market risk. Changes in exchange rates may have an adverse effect on the value price or income of the product. The Crabel Advanced Trend UCITS Fund (the "Fund") may use higher leverage and financial derivative instruments as part of the investment process. The distribution of this report does not constitute an offer or solicitation and this notice shall not be construed as an offer of sale in any other fund managed or advised by Crabel Capital Management, LLC or Waystone Fund Management (IE) Ltd ("Waystone"). The Investment Manager expects that typical investors will be seeking to achieve a return on their investment in the long term and are willing to accept the risks associated with an investment which may be volatile. Any investment in the Fund should be based on the full details contained in the Fund's Supplement Prospectus and Key Investor Information Document which together with the MontLake UCITS Platform ICAV Prospectus may be downloaded from the MontLake website (www.montlakeucits.com/funds/crabel-advanced-trend-ucits-fund). Information given in this document has been obtained from, or based upon, sources believed by us to be reliable and accurate although neither Waystone nor Crabel Capital Management, LLC accepts liability for the accuracy of the contents. The Representative in Switzerland is Waystone Fund Services (Switzerland) SA, Avenue Villamont 17, 1005 Lausanne, Switzerland, whilst the Paying Agent is NPB Neue Privat Bank AG, Limmatquai 1/am Bellevue, P.O. Box, CH-8024 Zurich. In respect of the units distributed in or from Switzerland, the place of performance and jurisdiction is at the registered office of the Swiss representative. The basic documents of the Fund as well as the annual and, if applicable, semi-annual report may be obtained free of charge at the registered office of the Swiss Representative. Issued and approved by Waystone Fund Management (IE) Ltd. Waystone does not offer investment advice or make recommendations regarding investments. The Manager of the Fund is Waystone Fund Management (IE) Ltd, a company regulated by the Central Bank of Ireland. The Investment Manager for the fund, Crabel Capital Management, LLC is authorised and regulated by the Securities Exchange Commission (the "SEC"). The MontLake UCITS Platform ICAV is registered and regulated as an open-ended Irish collective asset-management vehicle with segregated liability between sub-Funds formed in Ireland under the Irish Collective Asset Management Vehicles Act 2015 and authorised by the Central Bank as a UCITS pursuant to the UCITS Regulations. This notice shall not be construed as an offer of sale in the Fund. The state of the origin of the Fund is the Republic of Ireland. The performance data do not take account of the commissions and costs incurred on the issue and redemption of units. Authorised and Regulated by the Central Bank of Ireland. The Management Company may decide to terminate the arrangements made for the marketing of the Fund in accordance with Article 93a of Directive 2009/65/EC. To view the Summary of Investor Rights, please visit the following [link](#). This is a marketing communication.

For more information visit www.montlakeucits.com