

# Crabel Advanced Trend UCITS Fund

## CTA/Managed Futures

February 2021

### Performance Returns

The Crabel Advanced Trend UCITS Fund returned 4.54% during the month of February (USD Founder Class).

### Investment Objective & Strategy

The Crabel Advanced Trend UCITS Fund is advised by Los Angeles based managed futures trading pioneer, Crabel Capital Management, LLC. Crabel Advanced Trend is a portfolio of systematic trading strategies designed to efficiently capture long-term trend following returns across a diverse set of global futures and foreign exchange instruments. The program aims to generate greater alpha and deliver a more competitive risk-adjusted return than the broader trend following industry. In pursuing this objective, Crabel Advanced Trend employs multiple price-based strategies engineered to identify and profit from continuations in price movement across approximately 200 markets globally. The program seeks to mitigate downside risk by dynamically sizing trades relative to market volatility, actively employing the use of stops on all trades throughout the portfolio, and effectively diversifying overall portfolio volatility across market sectors and geographic regions. Individual positions are generally held for 35-45 days, and the portfolio in aggregate targets an annualized standard deviation of 15%.

### Monthly Commentary

The Crabel Advanced Trend UCITS Fund gained +4.54% in February, which brought the year-to-date return to +4.00%. While the first several weeks of the month provided strong positive return opportunities for Advanced Trend, the final week of the month was difficult. The most significant challenge over that week was a strong risk-off pullback in equity markets. Despite the pullback in equities, fixed income continued to sell off. Commodity markets generally rose consistently all month. Despite a disappointing final week, Advanced Trend had a positive return in equities in February. Beyond equity markets, the two dominant return themes for the portfolio were in fixed income and commodities. Commodities produced a very strong positive attribution, while fixed income suffered the largest negative attribution for the month. For the year, commodities have posted a significant positive attribution with both January and February showing encouraging results and continuing the theme from 2020. The fixed income sector, however, has traded to negative attributions over the first two months of the year as fixed income futures markets have sold off consistently to start the year. Given the low volatility footprint in that sector, Advanced Trend remained in a long-term lookback posture which resulted in losses as the portfolio maintained long fixed income positioning for much of the month. Foreign exchange provided a modest positive contribution. The US Dollar showed strength in some crosses and weakness in others, trading to a mixed result. Given the strong positive attribution from commodities, Crude Oil, Brent Crude and Copper were three of the four strongest performing markets. Four of the five worst performing markets in February were all in the fixed income sector.

### Why Advanced Trend?

- **Thoughtful Design.** Intuitive research into time-frame selection, sector exposure, volatility interpretation and trend quality identification is leveraged to maximize trend capture.
- **Aggressive Trading Cost Reduction.** The cost to execute a trend following strategy adds up far more quickly than is realized. Trade slippage is reduced through Crabel's proprietary algorithmic execution infrastructure.
- **Structurally Diversified.** The program is timeframe and sector diversified trading a broad array of derivative instruments.

	Jan	Feb	Mar	Apr	May	Jun	Jul	Aug	Sept	Oct	Nov	Dec	Y-T-D
2021	-0.47%	4.54%											4.00%
2020	3.68%	4.15%	8.88%	-0.02%	-4.51%	-2.19%	2.23%	-1.69%	-2.58%	-0.47%	4.61%	7.53%	20.36%
2019	-6.55%	0.27%	5.83%	0.86%	1.59%	2.20%	4.01%	8.12%	-4.16%	-5.72%	1.07%	-3.23%	3.23%
2018	9.22%	-10.72%	-0.83%	0.91%	-7.21%	-0.11%	-0.82%	2.11%	-1.27%	-4.17%	-1.75%	1.56%	-13.54%
2017	-	-	-	-	-	-	-	-	-	5.17%	3.31%	2.11%	10.95%

The performance figures quoted above represent the performance of the Crabel Advanced Trend UCITS Fund Founder USD Share Class, since launch on 2 October 2017. These performance figures refer to the past and past performance is not a reliable guide to future performance.

### The Manager



Crabel is a global alternative investment firm specializing in systematic, automated trading of worldwide futures and foreign exchange. Our Los Angeles based firm was founded by short-term trading pioneer Toby Crabel and has delivered over 25 years of uncorrelated returns for its institutional clients. The firm has developed a diverse array of trading strategies designed to systematically capture market anomalies implemented through a technologically advanced, low latency infrastructure. Global co-location facilities and proprietary execution algorithms allow the firm to efficiently trade in approximately 200 futures and foreign exchange markets.

### Fund Facts

Structure	UCITS Fund
Domicile	Ireland
Liquidity	Daily
Fund AUM	\$42.5 million
Strategy AUM	\$1.27 billion
Inception	2 October, 2017

Share Class	Founder Class
Currency	EUR/USD/CHF/GBP
Mgt. Fee	0.50%
Perf. Fee	0.00%
Min Init. Sub.	10,000,000
ISIN Codes	EUR: IE00BF2X0346 USD: IE00BF2X0569 CHF: IE00BF2X0452 GBP: IE00BF2X0676

Share Class	Inst Class A Pooled
Currency	EUR/USD/CHF/GBP
Mgt. Fee	0.00%
Perf. Fee	10.00%
Min Init. Sub.	10,000,000
ISIN Codes	EUR: IE00BG1V0Y71 USD: IE00BG1V1113 CHF: IE00BG1V0Z88 GBP: IE00BG1V1006

Share Class	Institutional Class
Currency	EUR/USD/CHF/GBP
Mgt. Fee	1.00%
Perf. Fee	0.00%
Min Init. Sub.	1,000,000
ISIN Codes	EUR: IE00BF2X0783 USD: IE00BF2X0908 CHF: IE00BF2X0890 GBP: IE00BF2X0B24

# Crabel Advanced Trend UCITS Fund

## CTA/Managed Futures

February 2021

### Monthly Returns – Crabel Advanced Trend Strategy (non-UCITS)<sup>^</sup>

	Jan	Feb	Mar	Apr	May	Jun	Jul	Aug	Sept	Oct	Nov	Dec	Y-T-D
2021	-0.67%	3.51%											2.81%*
2020	5.41%	4.36%	7.71%	-0.25%	-4.42%	-2.21%	2.40%	-0.96%	-2.45%	-0.40%	4.88%	8.24%	23.57%
2019	-6.81%	0.36%	6.22%	1.21%	3.60%	-0.03%	5.03%	8.62%	-4.94%	-5.79%	0.99%	-3.69%	3.48%
2018	8.86%	-10.68%	-0.30%	0.54%	-7.31%	-0.23%	-1.50%	2.98%	-1.07%	-3.95%	-2.15%	1.28%	-13.91%
2017	-3.01%	4.86%	-1.53%	-3.06%	-0.82%	-2.99%	3.11%	1.91%	-1.62%	5.83%	2.30%	2.86%	7.51%
2016	8.33%	2.66%	-5.85%	-5.16%	0.32%	6.22%	1.67%	-4.26%	-0.08%	-5.44%	-6.40%	1.22%	-7.80%
2015	15.17%	-1.24%	4.02%	-4.91%	1.21%	-5.79%	5.80%	-0.93%	3.85%	-4.24%	1.87%	-1.01%	12.76%
2014				-0.23%	1.63%	1.26%	-3.79%	4.90%	8.27%	8.99%	13.59%	8.69%	50.97%

\*Estimate

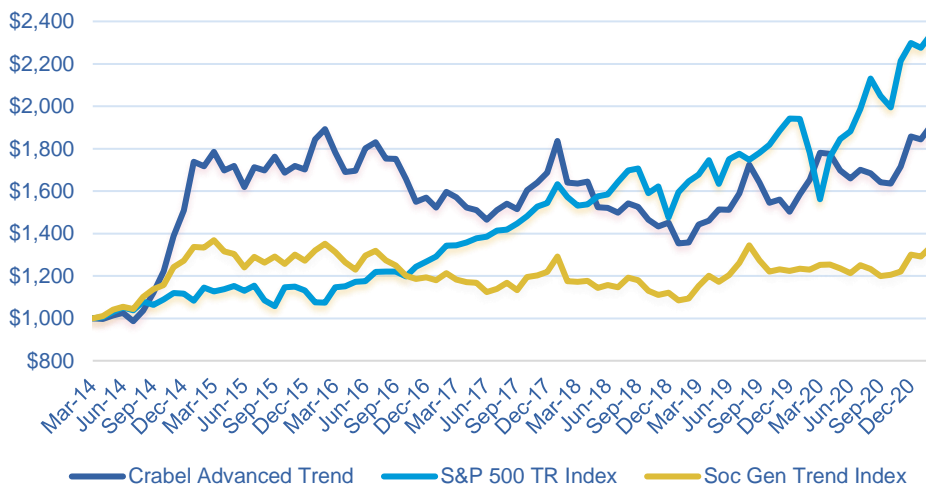
<sup>^</sup>The above performance pertains to a representative account of the Crabel Advanced Trend Strategy and is not representative of the MontLake Crabel Advanced Trend UCITS Fund. UCITS Funds have to abide by certain investment restrictions and consequently the performance of the MontLake Crabel Advanced Trend UCITS Fund may not be similar to that presented above.



**Grant Jaffarian**  
Portfolio Manager

Portfolio Manager of the Advanced Trend program, graduated from Wheaton College, IL with a double major in Economics and English in 2001. In 2010 Mr. Jaffarian received an MBA from University of Chicago. Mr. Jaffarian began his career at Belgium based Analytic Investment Management, a high turnover futures manager acquired by Robeco Bank. Upon leaving Analytic Investment, Mr. Jaffarian founded Petra Intraday, a short term systematic emerging manager. In 2004, Mr. Jaffarian joined Efficient Capital Management, LLC where he served as Chief Investment Officer before departing in December 2012. Mr. Jaffarian founded AlphaTerra, LLC in April 2013 to work with the world's most promising quant systematic trading strategies. In March 2014 AlphaTerra was acquired by Crabel Capital Management and Mr. Jaffarian assumed the role of Portfolio Manager for the Advanced Trend program while also continuing to carry the title of CIO for AlphaTerra. Mr. Jaffarian joined the Crabel Executive Committee in April 2016.

### Crabel Advanced Trend Strategy (non-UCITS) vs. Indices



**Michael Pomada**  
President & CEO

Michael Pomada is the President and Chief Executive Officer of Crabel Capital Management. In addition to his executive role, Michael is also the co-Portfolio Manager of Crabel Gemini and one of the chief architects behind the development of CCM's Advanced Trend strategy. Michael joined CCM in April 2008 as a portfolio manager focusing on CCM's Equity Main strategies and in late 2009, took on the responsibility of spearheading a firmwide initiative to improve the organization's trading infrastructure, execution process, and microstructure research. He is a member of the firm's executive and investment committees and, before being named CEO in July 2016, was previously CCM's Chief Operating Officer. Prior to joining CCM, Michael spent time at UBS before moving on to manage portfolios at Manchester Trading (Niederhoffer) and Coast Asset Management. Michael began his career in the Interactive Entertainment industry. A graduate of the University of California - Berkeley, Michael also holds an MBA with a concentration in Investments and Statistics from the University of Southern California.

### Basic Statistics – Crabel Advanced Trend UCITS Fund

CAGR	6.48%	Max DD	-26.02%
Annualized STDEV	15.36%	Max Positive Month	9.22%
Sharpe Ratio (Rf=0)	0.42	Max Negative Month	-10.72%

The figures above pertain to the Crabel Advanced Trend UCITS Fund

### Contact Details

#### Investor Contact

**Waystone Capital Solutions (UK) Ltd**  
2nd Floor, 20-22 Bedford Row  
Holborn, London  
T: +44 207 290 9493  
investorrelations@montlakefunds.com

#### Management Company

**Waystone Fund Management (IE) Ltd**  
23 St. Stephen's Green  
Dublin 2, Ireland  
T: +353 1 533 7020  
investorrelations@montlakefunds.com

#### Investment Manager

**Crabel Capital Management, LLC**  
10250 Constellation Blvd., Suite 2650  
Los Angeles, CA 90067  
T: +1 (310) 651-2900  
clientrelations@Crabel.com

### Disclaimer

**RISK WARNING:** Past performance is not a reliable indicator of future results, prices of investments and the returns from them may fall as well as rise. Investments in equities are subject to market risk. Changes in exchange rates may have an adverse effect on the value price or income of the product. The Crabel Advanced Trend UCITS Fund (the "Fund") may use higher leverage and financial derivative instruments as part of the investment process. The distribution of this report does not constitute an offer or solicitation and this notice shall not be construed as an offer of sale in any other fund managed or advised by Crabel Capital Management, LLC or Waystone Fund Management (IE) Ltd ("Waystone"). Any investment in the Fund should be based on the full details contained in the Fund's Supplement Prospectus and Key Investor Information Document which together with the MontLake UCITS Platform ICAV Prospectus may be downloaded from the MontLake website ([www.montlakeucits.com](http://www.montlakeucits.com)). Information given in this document has been obtained from, or based upon, sources believed by us to be reliable and accurate although neither Waystone nor Crabel Capital Management, LLC accepts liability for the accuracy of the contents. The Representative in Switzerland is ARM Swiss Representatives SA, Route de Cité-Ouest 2, 1196 Gland, Switzerland, whilst the Paying Agent is NPB Neue Privat Bank AG, Limmatquai 1/am Bellevue, P.O. Box, CH-8024 Zurich. In respect of the units distributed in or from Switzerland, the place of performance and jurisdiction is at the registered office of the Swiss representative. The basic documents of the Fund as well as the annual and, if applicable, semi-annual report may be obtained free of charge at the registered office of the Swiss Representative. Issued and approved by Waystone Fund Management (IE) Ltd. Waystone does not offer investment advice or make recommendations regarding investments. The Manager of the Fund is Waystone Fund Management (IE) Ltd, a company regulated by the Central Bank of Ireland. The Investment Manager for the fund, Crabel Capital Management, LLC is authorised and regulated by the Securities Exchange Commission (the "SEC"). The MontLake UCITS Platform ICAV is registered and regulated as an open-ended Irish collective asset-management vehicle with segregated liability between sub-Funds formed in Ireland under the Irish Collective Asset Management Vehicles Act 2015 and authorised by the Central Bank as a UCITS pursuant to the UCITS Regulations. This notice shall not be construed as an offer of sale in the Fund. The state of the origin of the Fund is the Republic of Ireland. The performance data do not take account of the commissions and costs incurred on the issue and redemption of units. Authorised and Regulated by the Central Bank of Ireland. This is a marketing document.