

# Crabel Advanced Trend UCITS Fund

## CTA/Managed Futures

August 2021

### Performance Returns

The Crabel Advanced Trend UCITS Fund returned -1.00% during the month of August (USD Founder Class).

### Investment Objective & Strategy

The Crabel Advanced Trend UCITS Fund traded to a loss of -1.00% in August, which reduced the year-to-date return to +2.84%. The equities sector exhibited a bullish environment overall in August. Despite a mid-month dip, by the end of August many equity markets closed at all-time highs. As a result of the consistent uptrend, five of the 10 strongest performing markets were equities. On the other hand, the energy sub-sector within commodities stood out as a difficult trading environment. Most energy instruments reversed recent bullish moves, trading to monthly lows two and a half weeks into the month. Though many markets rallied back to unchanged by month's end, Advanced Trend's medium-term trend following posture in the sector caused some whipsaws and a negative attribution. The foreign exchange and fixed income sectors also had negative attributions. As has been the case over the past four months, smaller markets were the main culprit. For example, the Korean Won and Indian Rupee were among the most difficult markets in foreign exchange. Similarly in fixed income, the German Bobl, Euro-BTP Italian Government Bond, and Euro-OAT French Government Bond were also among the most challenging markets. Overall, Advanced Trend is positioned with a risk-on bias, although long equities exposures are somewhat balanced by net longs in fixed income. Commodities positioning is generally long and would benefit from inflationary pressures, while the foreign exchange posture remains modestly short the US Dollar.

### Monthly Commentary

The Crabel Advanced Trend UCITS Fund struggled to a loss of -1.53% in July, which reduced the year-to-date return to +3.87%. The first two-thirds of July presented significant challenges for Advanced Trend. July 19th served to demarcate a difficult start to July from a strong finish for the month. US equity indices hit a monthly low on the 19th before rebounding consistently through month-end. Similarly, the US Dollar strengthened early in the month before weakening over the final two weeks of July. Additionally, energy markets sold off over the first part of July before recovering strongly into the close of the month. As a result, commodities, foreign exchange and equities all traded to a sharp loss to start July. While reversals in these moves later in the month aided Advanced Trend, the foreign exchange sector overall ended the month with a loss and commodities and equities recovered to end with gains. Fixed income markets continued to exhibit low volatility and range-bound behavior, leading to a modest loss. As was the case in June, foreign exchange markets were among the loss leaders in July. For the month, 11 of the 21 most difficult markets for Advanced Trend were foreign exchange markets. Positive attributions were spread across all four sectors, with each sector represented at least twice in the top ten markets traded in July.

### Why Advanced Trend?

- **Thoughtful Design.** Intuitive research into time-frame selection, sector exposure, volatility interpretation and trend quality identification is leveraged to maximize trend capture.
- **Aggressive Trading Cost Reduction.** The cost to execute a trend following strategy adds up far more quickly than is realized. Trade slippage is reduced through Crabel's proprietary algorithmic execution infrastructure.
- **Structurally Diversified.** The program is timeframe and sector diversified trading a broad array of derivative instruments.

	Jan	Feb	Mar	Apr	May	Jun	Jul	Aug	Sept	Oct	Nov	Dec	Y-T-D
2021	-0.47%	4.54%	-0.08%	3.24%	2.45%	-4.02%	-1.53%	-1.00%					2.84%
2020	3.68%	4.15%	8.88%	-0.02%	-4.51%	-2.19%	2.23%	-1.69%	-2.58%	-0.47%	4.61%	7.53%	20.36%
2019	-6.55%	0.27%	5.83%	0.86%	1.59%	2.20%	4.01%	8.12%	-4.16%	-5.72%	1.07%	-3.23%	3.23%
2018	9.22%	-10.72%	-0.83%	0.91%	-7.21%	-0.11%	-0.82%	2.11%	-1.27%	-4.17%	-1.75%	1.56%	-13.54%
2017	-	-	-	-	-	-	-	-	-	5.17%	3.31%	2.11%	10.95%

The performance figures quoted above represent the performance of the Crabel Advanced Trend UCITS Fund Founder USD Share Class, since launch on 2 October 2017. These performance figures refer to the past and past performance is not a reliable guide to future performance.

### The Manager



Crabel is a global alternative investment firm specializing in systematic, automated trading of worldwide futures and foreign exchange. Our Los Angeles based firm was founded by short-term trading pioneer Toby Crabel and has delivered over 25 years of uncorrelated returns for its institutional clients. The firm has developed a diverse array of trading strategies designed to systematically capture market anomalies implemented through a technologically advanced, low latency infrastructure. Global co-location facilities and proprietary execution algorithms allow the firm to efficiently trade in approximately 200 futures and foreign exchange markets.

### Fund Facts

Structure	UCITS Fund
Domicile	Ireland
Liquidity	Daily
Fund AUM	\$19.0 million
Strategy AUM	\$1.47 billion
Inception	2 October, 2017

Share Class	Founder Class
Currency	EUR/USD/CHF/GBP
Mgt. Fee	0.50%
Perf. Fee	0.00%
Min Init. Sub.	10,000,000
ISIN Codes	EUR: IE00BF2X0346 USD: IE00BF2X0569 CHF: IE00BF2X0452 GBP: IE00BF2X0676

Share Class	Inst Class A Pooled
Currency	EUR/USD/CHF/GBP
Mgt. Fee	0.00%
Perf. Fee	10.00%
Min Init. Sub.	10,000,000
ISIN Codes	EUR: IE00BG1V0Y71 USD: IE00BG1V1113 CHF: IE00BG1V0Z88 GBP: IE00BG1V1006

Share Class	Institutional Class
Currency	EUR/USD/CHF/GBP
Mgt. Fee	1.00%
Perf. Fee	0.00%
Min Init. Sub.	1,000,000
ISIN Codes	EUR: IE00BF2X0783 USD: IE00BF2X0908 CHF: IE00BF2X0890 GBP: IE00BF2X0B24

# Crabel Advanced Trend UCITS Fund

## CTA/Managed Futures

August 2021

### Monthly Returns – Crabel Advanced Trend Strategy (non-UCITS)<sup>^</sup>

	Jan	Feb	Mar	Apr	May	Jun	Jul	Aug	Sept	Oct	Nov	Dec	Y-T-D
2021	-0.67%	3.51%	0.51%	3.18%	2.81%	-4.42%	-3.15%	-0.74%*					0.72%*
2020	5.41%	4.36%	7.71%	-0.25%	-4.42%	-2.21%	2.40%	-0.96%	-2.45%	-0.40%	4.88%	8.24%	23.57%
2019	-6.81%	0.36%	6.22%	1.21%	3.60%	-0.03%	5.03%	8.62%	-4.94%	-5.79%	0.99%	-3.69%	3.48%
2018	8.86%	-10.68%	-0.30%	0.54%	-7.31%	-0.23%	-1.50%	2.98%	-1.07%	-3.95%	-2.15%	1.28%	-13.91%
2017	-3.01%	4.86%	-1.53%	-3.06%	-0.82%	-2.99%	3.11%	1.91%	-1.62%	5.83%	2.30%	2.86%	7.51%
2016	8.33%	2.66%	-5.85%	-5.16%	0.32%	6.22%	1.67%	-4.26%	-0.08%	-5.44%	-6.40%	1.22%	-7.80%
2015	15.17%	-1.24%	4.02%	-4.91%	1.21%	-5.79%	5.80%	-0.93%	3.85%	-4.24%	1.87%	-1.01%	12.76%
2014				-0.23%	1.63%	1.26%	-3.79%	4.90%	8.27%	8.99%	13.59%	8.69%	50.97%

\*Estimate

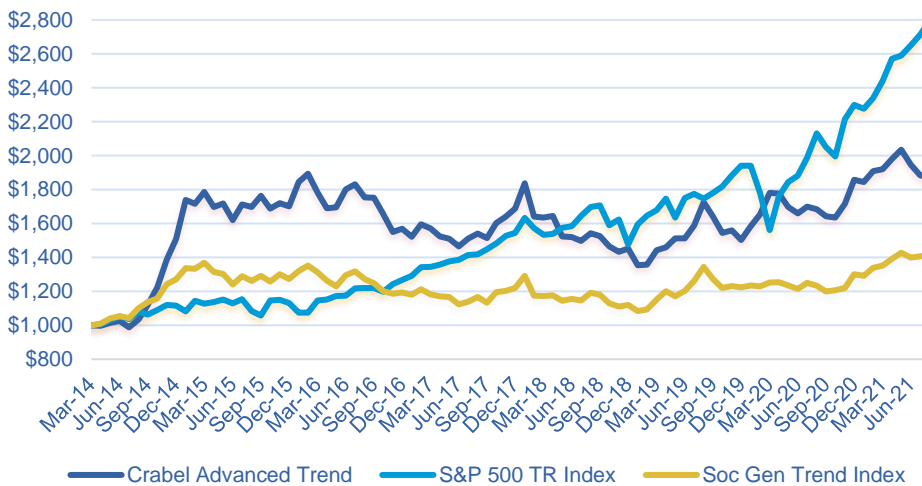
<sup>^</sup>The above performance pertains to a representative account of the Crabel Advanced Trend Strategy and is not representative of the MontLake Crabel Advanced Trend UCITS Fund. UCITS Funds have to abide by certain investment restrictions and consequently the performance of the MontLake Crabel Advanced Trend UCITS Fund may not be similar to that presented above.



**Grant Jaffarian**  
Portfolio Manager

Portfolio Manager of the Advanced Trend program, graduated from Wheaton College, IL with a double major in Economics and English in 2001. In 2010 Mr. Jaffarian received an MBA from University of Chicago. Mr. Jaffarian began his career at Belgium based Analytic Investment Management, a high turnover futures manager acquired by Robeco Bank. Upon leaving Analytic Investment, Mr. Jaffarian founded Petra Intraday, a short term systematic emerging manager. In 2004, Mr. Jaffarian joined Efficient Capital Management, LLC where he served as Chief Investment Officer before departing in December 2012. Mr. Jaffarian founded AlphaTerra, LLC in April 2013 to work with the world's most promising quant systematic trading strategies. In March 2014 AlphaTerra was acquired by Crabel Capital Management and Mr. Jaffarian assumed the role of Portfolio Manager for the Advanced Trend program while also continuing to carry the title of CIO for AlphaTerra. Mr. Jaffarian joined the Crabel Executive Committee in April 2016.

### Crabel Advanced Trend Strategy (non-UCITS) vs. Indices



**Michael Pomada**  
President & CEO

Michael Pomada is the President and Chief Executive Officer of Crabel Capital Management. In addition to his executive role, Michael is also the co-Portfolio Manager of Crabel Gemini and one of the chief architects behind the development of CCM's Advanced Trend strategy. Michael joined CCM in April 2008 as a portfolio manager focusing on CCM's Equity Main strategies and in late 2009, took on the responsibility of spearheading a firmwide initiative to improve the organization's trading infrastructure, execution process, and microstructure research. He is a member of the firm's executive and investment committees and, before being named CEO in July 2016, was previously CCM's Chief Operating Officer. Prior to joining CCM, Michael spent time at UBS before moving on to manage portfolios at Manchester Trading (Niederhoffer) and Coast Asset Management. Michael began his career in the Interactive Entertainment industry. A graduate of the University of California - Berkeley, Michael also holds an MBA with a concentration in Investments and Statistics from the University of Southern California.

### Basic Statistics – Crabel Advanced Trend UCITS Fund

<b>CAGR</b>	5.33%	<b>Max DD</b>	-26.02%
<b>Annualized STDEV</b>	14.67%	<b>Max Positive Month</b>	9.22%
<b>Sharpe Ratio (Rf=0)</b>	0.36	<b>Max Negative Month</b>	-10.72%

The figures above pertain to the Crabel Advanced Trend UCITS Fund

### Contact Details

#### Investor Contact

**Waystone Capital Solutions (UK) Ltd**  
2nd Floor, 20-22 Bedford Row  
Holborn, London  
T: +44 207 290 9493  
investorrelations@waystone.com

#### Management Company

**Waystone Fund Management (IE) Ltd**  
3rd Floor, 76 Baggot Street Lower  
Dublin, Ireland  
T: +353 1 533 7020  
investorrelations@waystone.com

#### Investment Manager

**Crabel Capital Management, LLC**  
10250 Constellation Blvd., Suite 2650  
Los Angeles, CA 90067  
T: +1 (310) 651-2900  
clientrelations@Crabel.com

### Disclaimer

**RISK WARNING:** Past performance is not a reliable indicator of future results, prices of investments and the returns from them may fall as well as rise. Investments in equities are subject to market risk. Changes in exchange rates may have an adverse effect on the value price or income of the product. The Crabel Advanced Trend UCITS Fund (the "Fund") may use higher leverage and financial derivative instruments as part of the investment process. The distribution of this report does not constitute an offer or solicitation and this notice shall not be construed as an offer of sale in any other fund managed or advised by Crabel Capital Management, LLC or Waystone Fund Management (IE) Ltd ("Waystone"). Any investment in the Fund should be based on the full details contained in the Fund's Supplement Prospectus and Key Investor Information Document which together with the MontLake UCITS Platform ICAV Prospectus may be downloaded from the MontLake website ([www.montlakeucits.com/funds/crabel-advanced-trend-ucits-fund](http://www.montlakeucits.com/funds/crabel-advanced-trend-ucits-fund)). Information given in this document has been obtained from, or based upon, sources believed by us to be reliable and accurate although neither Waystone nor Crabel Capital Management, LLC accepts liability for the accuracy of the contents. The Representative in Switzerland is Waystone Fund Services (Switzerland) SA, Avenue Villamont 17, 1005 Lausanne, Switzerland, whilst the Paying Agent is NPB Neue Privat Bank AG, Limmatquai 1/am Bellevue, P.O. Box, CH-8024 Zurich. In respect of the units distributed in or from Switzerland, the place of performance and jurisdiction is at the registered office of the Swiss representative. The basic documents of the Fund as well as the annual and, if applicable, semi-annual report may be obtained free of charge at the registered office of the Swiss Representative. Issued and approved by Waystone Fund Management (IE) Ltd. Waystone does not offer investment advice or make recommendations regarding investments. The Manager of the Fund is Waystone Fund Management (IE) Ltd, a company regulated by the Central Bank of Ireland. The Investment Manager for the fund, Crabel Capital Management, LLC is authorised and regulated by the Securities Exchange Commission (the "SEC"). The MontLake UCITS Platform ICAV is registered and regulated as an open-ended Irish collective asset-management vehicle with segregated liability between sub-Funds formed in Ireland under the Irish Collective Asset management Vehicles Act 2015 and authorised by the Central Bank as a UCITS pursuant to the UCITS Regulations. This notice shall not be construed as an offer of sale in the Fund. The state of the origin of the Fund is the Republic of Ireland. The performance data do not take account of the commissions and costs incurred on the issue and redemption of units. Authorised and Regulated by the Central Bank of Ireland. The Management Company may decide to terminate the arrangements made for the marketing of the Fund in accordance with Article 93a of Directive 2009/65/EC. To view the Summary of Investor Rights, please visit the following [link](#). This is a marketing communication.

For more information visit [www.montlakeucits.com](http://www.montlakeucits.com)