

Crabel Advanced Trend UCITS Fund

CTA/Managed Futures

June 2022

Performance Returns

The Crabel Advanced Trend UCITS Fund returned +3.35% during the month of June (USD Founder Class).

Investment Objective & Strategy

The Crabel Advanced Trend UCITS Fund is advised by Los Angeles based managed futures trading pioneer, Crabel Capital Management, LLC. Crabel Advanced Trend is a portfolio of systematic trading strategies designed to efficiently capture long-term trend following returns across a diverse set of global futures and foreign exchange instruments. The program aims to generate greater alpha and deliver a more competitive risk-adjusted return than the broader trend following industry. In pursuing this objective, Crabel Advanced Trend employs multiple price-based strategies engineered to identify and profit from continuations in price movement across approximately 200 markets globally. The program seeks to mitigate downside risk by dynamically sizing trades relative to market volatility, actively employing the use of stops on all trades throughout the portfolio, and effectively diversifying overall portfolio volatility across market sectors and geographic regions. Individual positions are generally held for 35-45 days, and the portfolio in aggregate targets an annualized standard deviation of 15%.

Monthly Commentary

The Crabel Advanced Trend UCITS Fund traded to a gain of +3.35% in June, which increased the year-to-date return to +23.48%. The first half of the month presented the portfolio with a continuation of the risk-off market environment that has dominated 2022 thus far. Advanced Trend responded with a very strong start to the month. While the second half of the month was more difficult, the month finished with another good return overall. The opportunity set for June did not follow the same profile as the preceding five months. For the first time this year, the commodities sector posted a negative attribution, troubled by a sharp reversal in Natural Gas markets. The equities sector, which had traded to a negative attribution in each of the previous five months, posted a modest loss, driven by the bearish environment that started the month. While the fixed income sector enjoyed another good month, the foreign exchange sector posted the strongest positive attribution and the largest positive return from that sector this year. The top seven market attributions in June were foreign exchange markets. Except for the Japanese Yen, the best performing markets were non-G7 currency pairs against the US Dollar. The Turkish Lira, Corn, the FTSE 100 Index, and UK Natural Gas were the four most difficult markets, representing each of the four market sectors.

Why Advanced Trend?

- **Thoughtful Design.** Intuitive research into time-frame selection, sector exposure, volatility interpretation and trend quality identification is leveraged to maximize trend capture.
- **Aggressive Trading Cost Reduction.** The cost to execute a trend following strategy adds up far more quickly than is realized. Trade slippage is reduced through Crabel's proprietary algorithmic execution infrastructure.
- **Structurally Diversified.** The program is timeframe and sector diversified trading a broad array of derivative instruments.

	Jan	Feb	Mar	Apr	May	Jun	Jul	Aug	Sept	Oct	Nov	Dec	Y-T-D
2022	1.53%	3.67%	8.48%	5.07%	-0.42%	3.35%							23.48%
2021	-0.47%	4.54%	-0.08%	3.24%	2.45%	-4.02%	-1.53%	-1.00%	-1.83%	6.85%	-7.15%	0.79%	0.95%
2020	3.68%	4.15%	8.88%	-0.02%	-4.51%	-2.19%	2.23%	-1.69%	-2.58%	-0.47%	4.61%	7.53%	20.36%
2019	-6.55%	0.27%	5.83%	0.86%	1.59%	2.20%	4.01%	8.12%	-4.16%	-5.72%	1.07%	-3.23%	3.23%
2018	9.22%	-10.72%	-0.83%	0.91%	-7.21%	-0.11%	-0.82%	2.11%	-1.27%	-4.17%	-1.75%	1.56%	-13.54%
2017	-	-	-	-	-	-	-	-	-	5.17%	3.31%	2.11%	10.95%

The performance figures quoted above represent the performance of the Crabel Advanced Trend UCITS Fund Founder USD Share Class, since launch on 2 October 2017. These performance figures refer to the past and past performance is not a reliable guide to future performance.

The Manager



Crabel is a global alternative investment firm specializing in systematic, automated trading of worldwide futures and foreign exchange. Our Los Angeles based firm was founded by short-term trading pioneer Toby Crabel and has delivered over 25 years of uncorrelated returns for its institutional clients. The firm has developed a diverse array of trading strategies designed to systematically capture market anomalies implemented through a technologically advanced, low latency infrastructure. Global co-location facilities and proprietary execution algorithms allow the firm to efficiently trade in approximately 200 futures and foreign exchange markets.

Fund Facts

Structure	UCITS Fund
Domicile	Ireland
Liquidity	Daily
Fund AUM	\$81.2 million
Strategy AUM	\$2.01 billion
Inception	2 October, 2017

Share Class	Founder Class
Currency	EUR/USD/CHF/GBP
Mgt. Fee	0.50%
Perf. Fee	0.00%
Min Init. Sub.	10,000,000
ISIN Codes	EUR: IE00BF2X0346 USD: IE00BF2X0569 CHF: IE00BF2X0452 GBP: IE00BF2X0676

Share Class	Inst Class A Pooled
Currency	EUR/USD/CHF/GBP
Mgt. Fee	0.00%
Perf. Fee	10.00%
Min Init. Sub.	10,000,000
ISIN Codes	EUR: IE00BG1V0Y71 USD: IE00BG1V1113 CHF: IE00BG1V0Z88 GBP: IE00BG1V1006

Share Class	Institutional Class
Currency	EUR/USD/CHF/GBP
Mgt. Fee	1.00%
Perf. Fee	0.00%
Min Init. Sub.	1,000,000
ISIN Codes	EUR: IE00BF2X0783 USD: IE00BF2X0908 CHF: IE00BF2X0890 GBP: IE00BF2X0B24

Crabel Advanced Trend UCITS Fund

CTA/Managed Futures

June 2022

Monthly Returns – Crabel Advanced Trend Strategy (non-UCITS)[^]

	Jan	Feb	Mar	Apr	May	Jun	Jul	Aug	Sept	Oct	Nov	Dec	Y-T-D
2022	2.57%	3.18%	8.61%	6.07%	-0.53%	4.11%*							26.27%*
2021	-0.67%	3.51%	0.51%	3.18%	2.81%	-4.42%	-3.15%	-0.74%	-1.80%	8.15%	-7.99%	1.52%	-0.08%
2020	5.41%	4.36%	7.71%	-0.25%	-4.42%	-2.21%	2.40%	-0.96%	-2.45%	-0.40%	4.88%	8.24%	23.57%
2019	-6.81%	0.36%	6.22%	1.21%	3.60%	-0.03%	5.03%	8.62%	-4.94%	-5.79%	0.99%	-3.69%	3.48%
2018	8.86%	-10.68%	-0.30%	0.54%	-7.31%	-0.23%	-1.50%	2.98%	-1.07%	-3.95%	-2.15%	1.28%	-13.91%
2017	-3.01%	4.86%	-1.53%	-3.06%	-0.82%	-2.99%	3.11%	1.91%	-1.62%	5.83%	2.30%	2.86%	7.51%
2016	8.33%	2.66%	-5.85%	-5.16%	0.32%	6.22%	1.67%	-4.26%	-0.08%	-5.44%	-6.40%	1.22%	-7.80%
2015	15.17%	-1.24%	4.02%	-4.91%	1.21%	-5.79%	5.80%	-0.93%	3.85%	-4.24%	1.87%	-1.01%	12.76%
2014	-	-	-	-0.23%	1.63%	1.26%	-3.79%	4.90%	8.27%	8.99%	13.59%	8.69%	50.97%

*Estimate

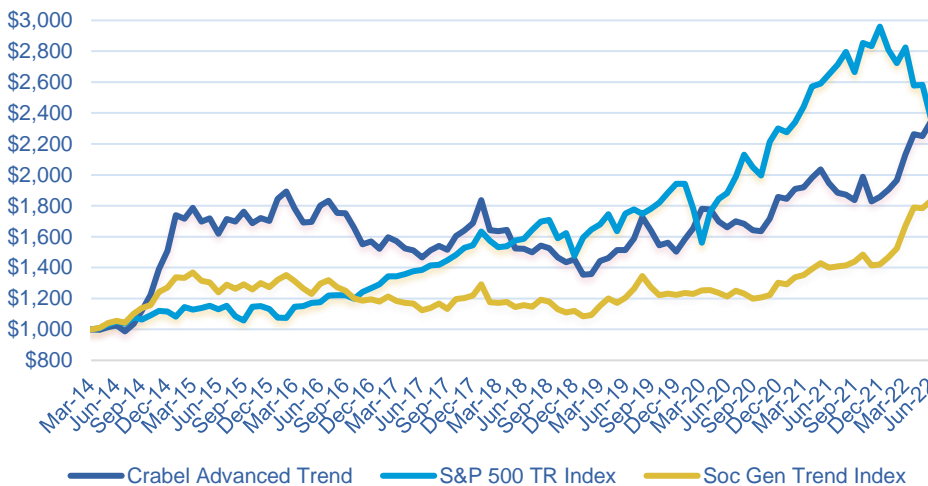
[^]The above performance pertains to a representative account of the Crabel Advanced Trend Strategy and is not representative of the MontLake Crabel Advanced Trend UCITS Fund. UCITS Funds have to abide by certain investment restrictions and consequently the performance of the MontLake Crabel Advanced Trend UCITS Fund may not be similar to that presented above.



Grant Jaffarian
Portfolio Manager

Portfolio Manager of the Advanced Trend program, graduated from Wheaton College, IL with a double major in Economics and English in 2001. In 2010 Mr. Jaffarian received an MBA from University of Chicago. Mr. Jaffarian began his career at Belgium based Analytic Investment Management, a high turnover futures manager acquired by Robeco Bank. Upon leaving Analytic Investment, Mr. Jaffarian founded Petra Intraday, a short term systematic emerging manager. In 2004, Mr. Jaffarian joined Efficient Capital Management, LLC where he served as Chief Investment Officer before departing in December 2012. Mr. Jaffarian founded AlphaTerra, LLC in April 2013 to work with the world's most promising quant systematic trading strategies. In March 2014 AlphaTerra was acquired by Crabel Capital Management and Mr. Jaffarian assumed the role of Portfolio Manager for the Advanced Trend program while also continuing to carry the title of CIO for AlphaTerra. Mr. Jaffarian joined the Crabel Executive Committee in April 2016.

Crabel Advanced Trend Strategy (non-UCITS) vs. Indices



Michael Pomada
President & CEO

Michael Pomada is the President and Chief Executive Officer of Crabel Capital Management. In addition to his executive role, Michael is also the co-Portfolio Manager of Crabel Gemini and one of the chief architects behind the development of CCM's Advanced Trend strategy. Michael joined CCM in April 2008 as a portfolio manager focusing on CCM's Equity Main strategies and in late 2009, took on the responsibility of spearheading a firmwide initiative to improve the organization's trading infrastructure, execution process, and microstructure research. He is a member of the firm's executive and investment committees and, before being named CEO in July 2016, was previously CCM's Chief Operating Officer. Prior to joining CCM, Michael spent time at UBS before moving on to manage portfolios at Manchester Trading (Niederhoffer) and Coast Asset Management. Michael began his career in the Interactive Entertainment industry. A graduate of the University of California - Berkeley, Michael also holds an MBA with a concentration in Investments and Statistics from the University of Southern California.

Basic Statistics – Crabel Advanced Trend UCITS Fund

CAGR	8.69%	Max DD	-26.02%
Annualized STDEV	14.85%	Max Positive Month	9.22%
Sharpe Ratio (RF=0)	0.58	Max Negative Month	-10.72%

The figures above pertain to the Crabel Advanced Trend UCITS Fund

Contact Details

Investor Contact

Waystone Capital Solutions (UK) Ltd
2nd Floor, 20-22 Bedford Row
Holborn, London
T: +44 207 290 9493
investorrelations@waystone.com

Management Company

Waystone Fund Management (IE) Ltd
3rd Floor, 76 Baggot Street Lower
Dublin, Ireland
T: +353 1 533 7020
investorrelations@waystone.com

Investment Manager

Crabel Capital Management, LLC
10250 Constellation Blvd., Suite 2650
Los Angeles, CA 90067
T: +1 (310) 651-2900
clientrelations@Crabel.com

Disclaimer

RISK WARNING: Past performance is not a reliable indicator of future results, prices of investments and the returns from them may fall as well as rise. Investments in equities are subject to market risk. Changes in exchange rates may have an adverse effect on the value price or income of the product. The Crabel Advanced Trend UCITS Fund (the "Fund") may use higher leverage and financial derivative instruments as part of the investment process. The distribution of this report does not constitute an offer or solicitation and this notice shall not be construed as an offer of sale in any other fund managed or advised by Crabel Capital Management, LLC or Waystone Fund Management (IE) Ltd ("Waystone"). The Investment Manager expects that typical investors will be seeking to achieve a return on their investment in the long term and are willing to accept the risks associated with an investment which may be volatile. Any investment in the Fund should be based on the full details contained in the Fund's Supplement Prospectus and Key Investor Information Document which together with the MontLake UCITS Platform ICAV Prospectus may be downloaded from the MontLake website (www.montlakeucits.com/funds/crabel-advanced-trend-ucits-fund). Information given in this document has been obtained from, or based upon, sources believed by us to be reliable and accurate although neither Waystone nor Crabel Capital Management, LLC accepts liability for the accuracy of the contents. The Representative in Switzerland is Waystone Fund Services (Switzerland) SA, Avenue Villamont 17, 1005 Lausanne, Switzerland, whilst the Paying Agent is NPB Neue Privat Bank AG, Limmatquai 1/am Bellevue, P.O. Box, CH-8024 Zurich. In respect of the units distributed in or from Switzerland, the place of performance and jurisdiction is at the registered office of the Swiss representative. The basic documents of the Fund as well as the annual and, if applicable, semi-annual report may be obtained free of charge at the registered office of the Swiss Representative. Issued and approved by Waystone Fund Management (IE) Ltd. Waystone does not offer investment advice or make recommendations regarding investments. The Manager of the Fund is Waystone Fund Management (IE) Ltd, a company regulated by the Central Bank of Ireland. The Investment Manager for the fund, Crabel Capital Management, LLC is authorised and regulated by the Securities Exchange Commission (the "SEC"). The MontLake UCITS Platform ICAV is registered and regulated as an open-ended Irish collective asset-management vehicle with segregated liability between sub-Funds formed in Ireland under the Irish Collective Asset Management Vehicles Act 2015 and authorised by the Central Bank as a UCITS pursuant to the UCITS Regulations. This notice shall not be construed as an offer of sale in the Fund. The state of the origin of the Fund is the Republic of Ireland. The performance data do not take account of the commissions and costs incurred on the issue and redemption of units. Authorised and Regulated by the Central Bank of Ireland. The Management Company may decide to terminate the arrangements made for the marketing of the Fund in accordance with Article 93a of Directive 2009/65/EC. To view the Summary of Investor Rights, please visit the following [link](#). This is a marketing communication.

For more information visit www.montlakeucits.com